

May 22, 2020

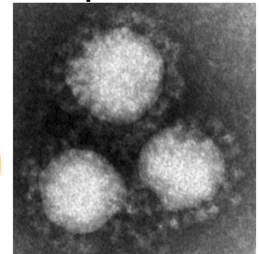
Attention, Citizens of Okayama Prefecture

~A request concerning infectious diseases stemmed from the new corona virus~

What is the corona virus?

When infected, the corona virus causes fevers, throat pain, coughing and cold-like symptoms. In severe cases, it can lead to pneumonia.

Washing one's hands with soap and disinfecting with alcohol is known to be effective measures for preventing it.



Source: National Institute of Infectious Diseases

< To the Citizens of Okayama Prefecture >

- As with the common cold or influenza, please be sure to keep general preventative measures for infectious diseases in mind, such as coughing etiquette and washing one's hands.
- If any of the following symptoms apply to you, please contact a COVID-19 Diagnosis Consultation Center (contact information on the reverse side) immediately. (You may receive consultation even if you do not have any of the listed symptoms.)



- ① If you are having respiratory problems, experiencing intense lethargy, or running a high fever.
- ② If you are an individual who is prone to severe diseases* and you have faint symptoms of a cold, such as a slight fever or cough.
- ③ If any of the items listed above apply to you and you have continuing slight symptoms of a cold.

(Please be sure to contact a consultation center if any of your symptoms continue for four days or longer. If you feel that your symptoms are strong, please consult immediately, as the symptoms vary with the individual. This also applies to those who are taking antipyretics.)

- We ask that individuals with symptoms take leave from work or school and refrain from going out.



If you have any questions or concerns about the new corona virus or the infectious diseases that stem from it, please contact our consultation desk.

New Corona Virus and Infectious Disease Consultation Desk

Phone: 086-226-7877 Fax: 086-225-7283

24-hour Consultation We accept contact via FAX on weekdays from 9AM to 5PM



©Okayama Prefecture
Momocchi and Uracchi



Okayama Prefecture Department of Health and Social
Welfare, Health Promotion Division